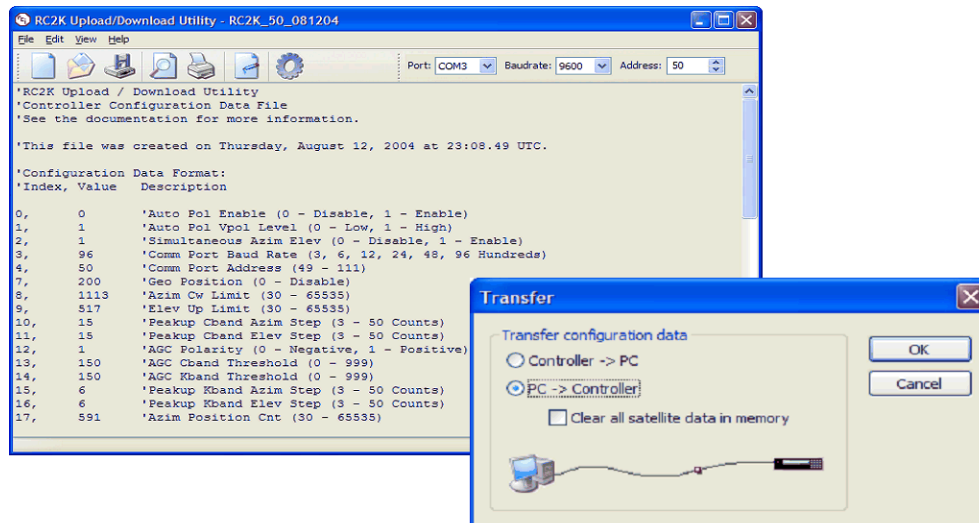




Research Concepts, Inc.

Satellite Antenna Control Solutions

RC2000A Backup & Restore



Features

- **One-step backup** of one or an entire rack of controllers
- **One-step restore** in case of memory failure
- **Clone entire memory** from one controller to another
- **Create subsets** of configuration and/or satellite data
- **Intuitive interface** makes it easy to understand for all users
- **Continuous log** keeps track of all operations performed
- **Troubleshooter** makes it easy to resolve serial communication issues

Overview

This application is a backup and restore utility for RC2000A antenna controllers. It helps any user eliminate setup time by saving CONFIG items and satellite data entries into a text file.

A subset or the entire file can then be transferred back into the non-volatile memory of any RC2000A. This simple, but powerful facility makes this application an essential tool for any satellite engineer.

Requirements

- RC2000A with software version 2.7 or later
- RC1KADP Protocol Converter
- Windows 2000/XP
- Serial port / USB-to-serial adapter

Sample Text File Contents

```
'Configuration Data Format:
'Index,      Value Description

0,    0      'Auto Pol Enable (0 - Disable, 1 - Enable)
1,    1      'Auto Pol Vpol Level (0 - Low, 1 - High)
3,    96     'Comm Por Baud Rate (3, 6, 12, 24, 48, 96 Hundreds)
4,    50     'Comm Port Address (49 - 111)
8,    446    'Azim Cw Limit (30 - 65535)
9,    430    'Elev Up Limit (30 - 65535)
17,   447    'Azim Position Cnt (30 - 65535)
20,   254    'Azim Slow Speed (0 - 254)
21,   254    'Elev Slow Speed (0 - 254)
22,   0      'Ang Disp Enable (0 - Disable, 1 - Enable)
23,   1      'Ang Disp Azim Scale (1 - 65535)
24,   0      'Ang Disp Azim Offset (0 - 65535)
25,   1      'Ang Disp Elev Scale (1 - 65535)
26,   0      'Ang Disp Elev Offset (0 - 65535)
27,   1      'Ang Disp Northern Hemi (0 - South, 1 - North)
29,   0      'Pol Ang Disp Enable (0 - Disable, 1 - Enable)
30,   500    'Pol Disp 0 Degree Cnt (1 - 1023)
31,   750    'Pol Disp 90 Degree Cnt (1 - 1023)
32,   0      'Drive Options Enable (0 - Disable, 1 - Enable)
33,   80     'Azim Fast Slow Threshold (0 - 400 Counts)
34,   4      'Azim Coast Threshold (1 - 40 Counts)
36,   3      'Azim Max Retry Cnt (2 - 5)
37,   2000   'Azim Fast Deadband (175 - 5000 MSec)
38,   800    'Azim Slow Deadband (175 - 5000 MSec)
39,   80     'Elev Fast Slow Threshold (0 - 400 Counts)
40,   4      'Elev Coast Threshold (1 - 40 Counts)
42,   3      'Elev Max Retry Cnt (2 - 5)
43,   2000   'Elev Fast Deadband (175 - 5000 MSec)
44,   800    'Elev Slow Deadband (175 - 5000 MSec)
45,   1000   'Pol Motor Jog Duration (175 - 3000 MSec)
47,   432    'Elev Position Cnt (30 - 65535)
48,   800    'Pol CCW Limit (0 - 1023)
49,   200    'Pol CW Limit (0 - CCW Limit)

'Satellite Data Format:
'Name, Azim, Elev, HPol, VPol, Band, Lon

AMC 6, 258, 118, 506, 423, 2, -720
PAS 3R, 909, 308, 506, 337, 1, -431

EOF
```