

A

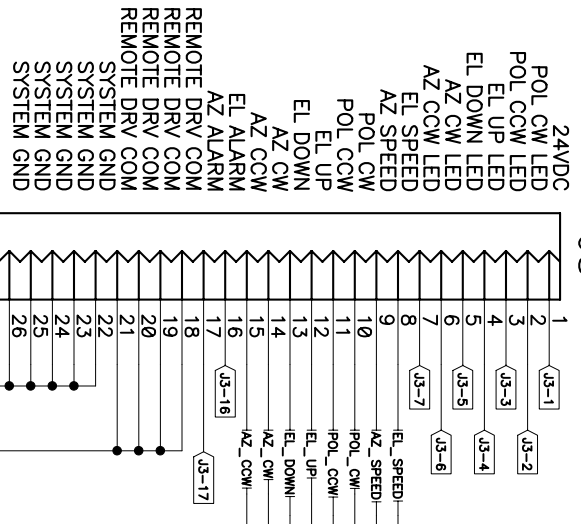
B

C

D

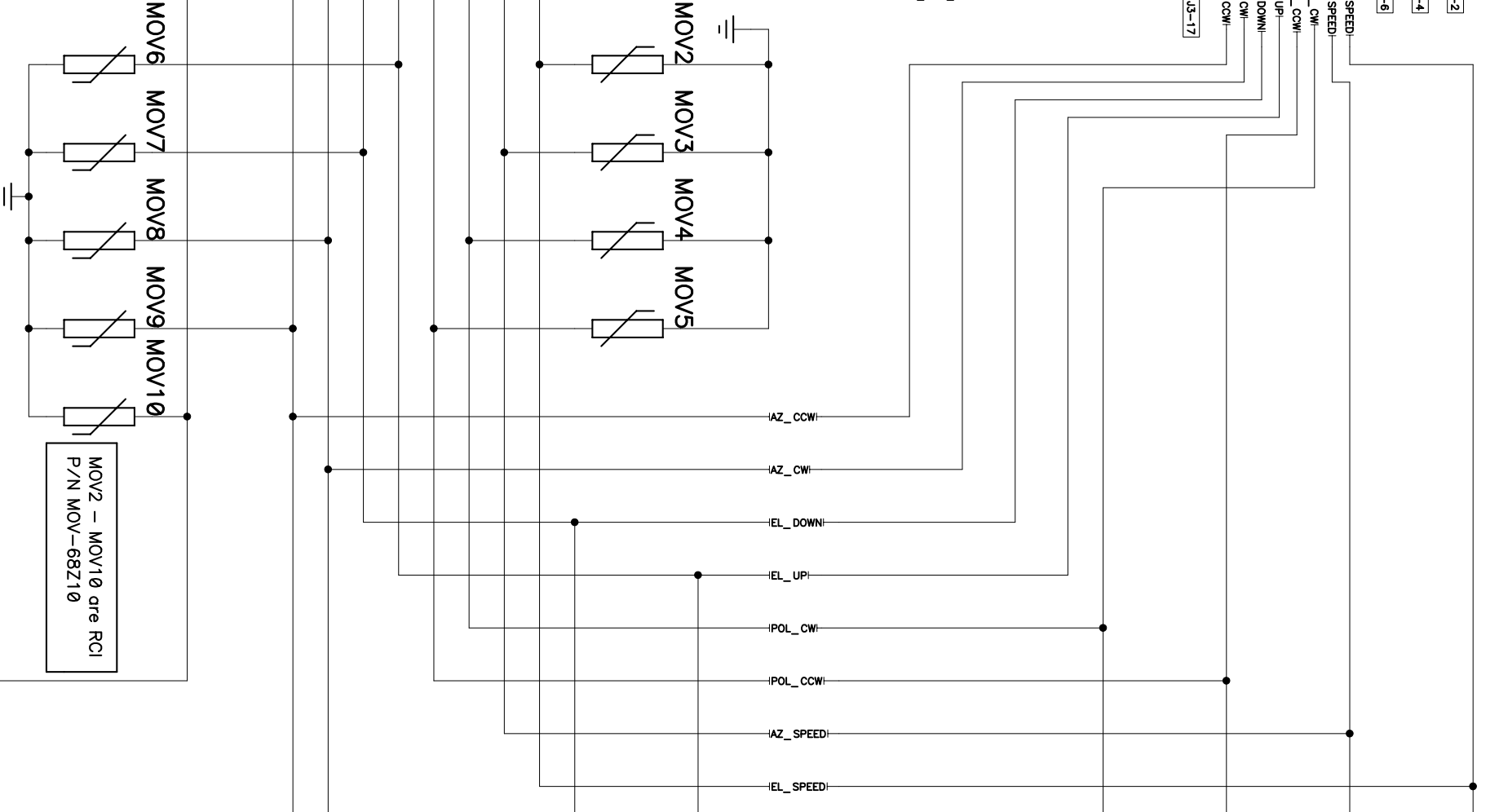
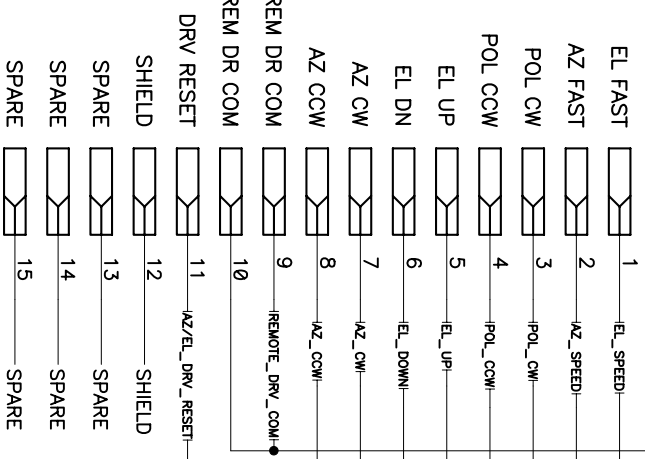
TO JOG PANEL

RIBBON CONN



ACU COM

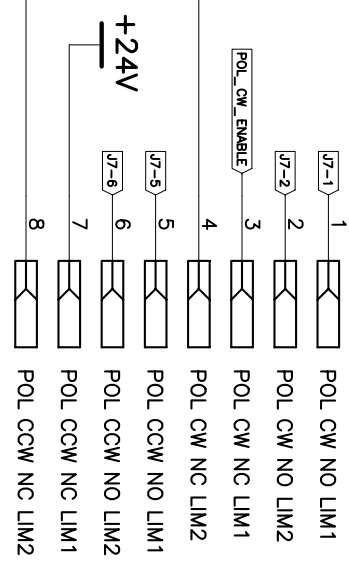
J4



MOV2 - MOV10 are RCI P/N MOV-68Z10

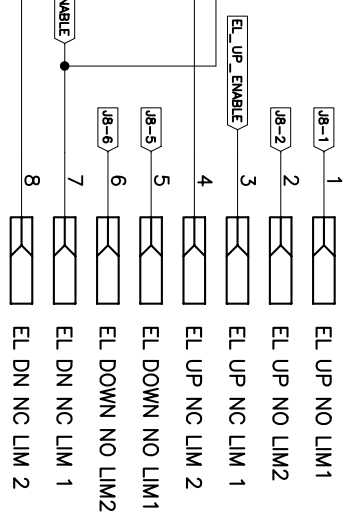
POL LIMITS

J7



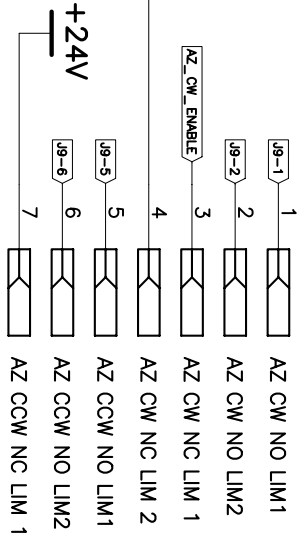
ELEV LIMITS

J8



AZIM LIMITS

J9



Title RC2500 AIU Main Board

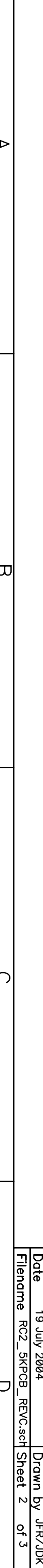
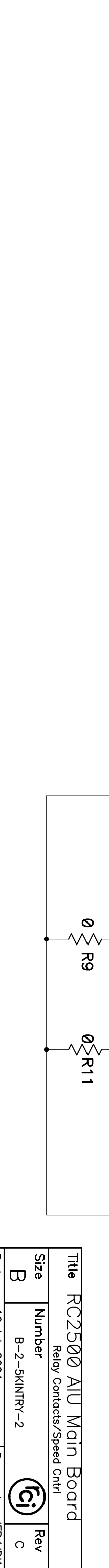
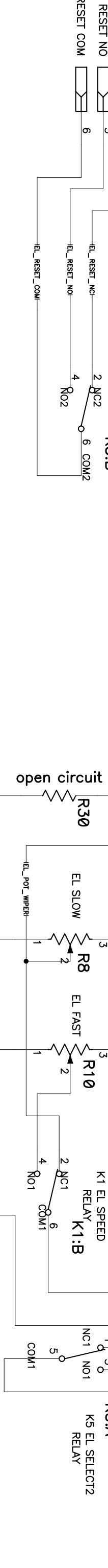
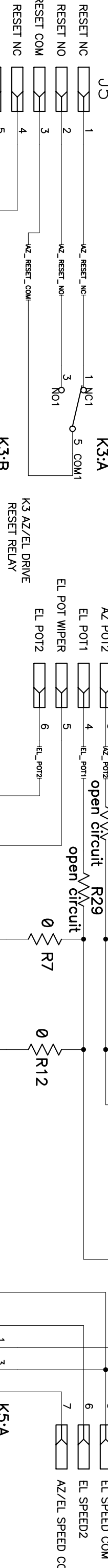
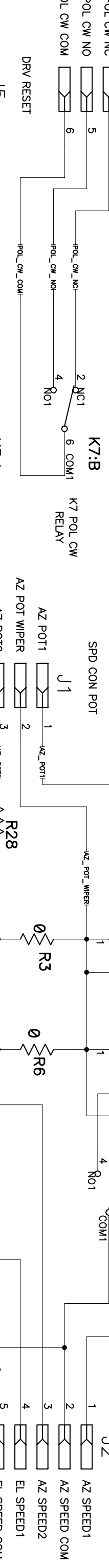
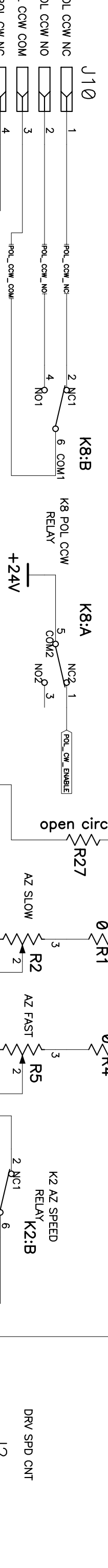
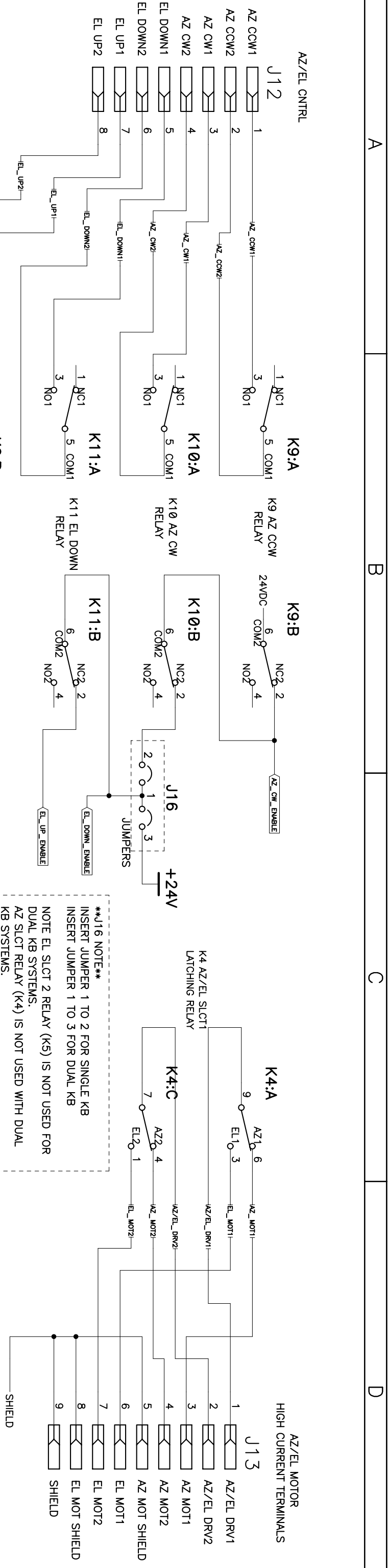
Relay Coils

Revision History:

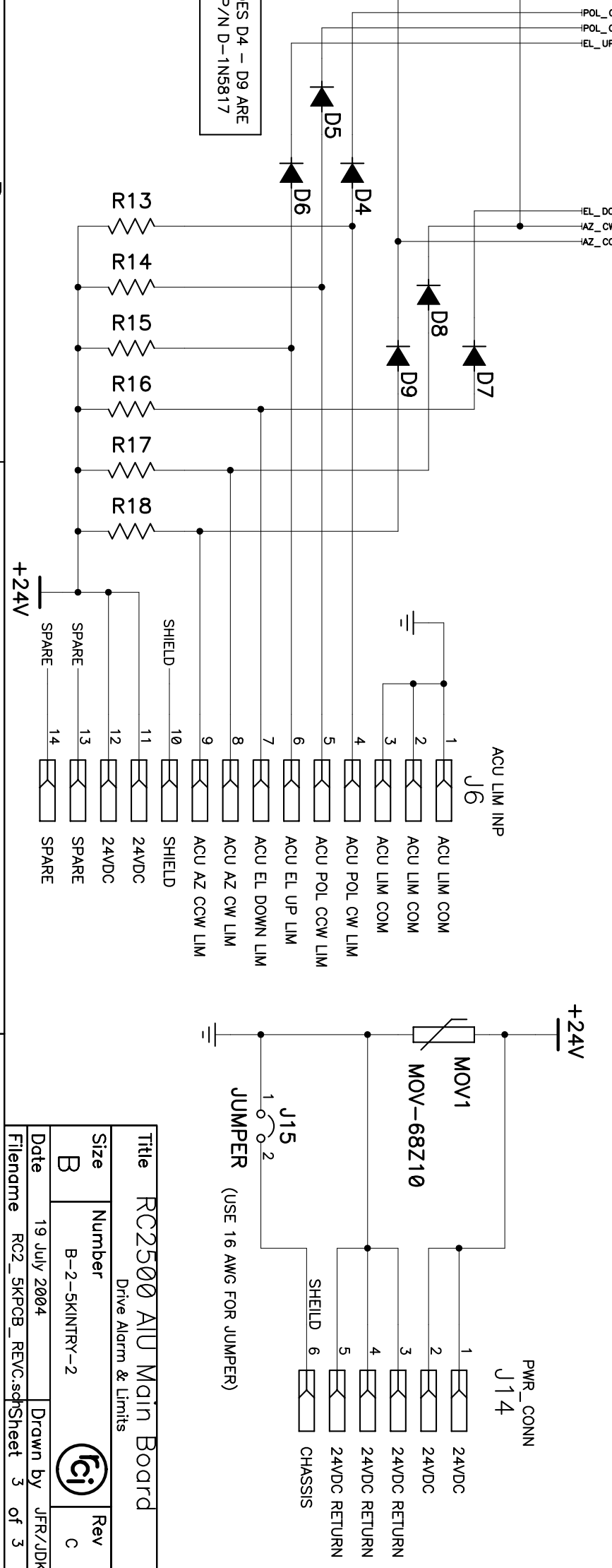
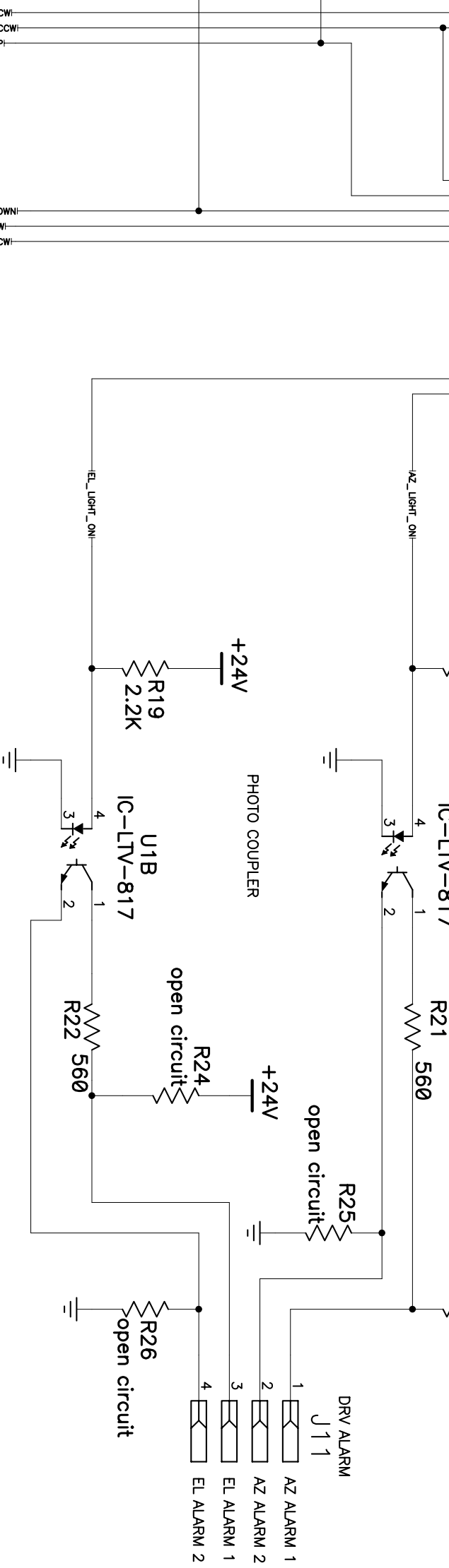
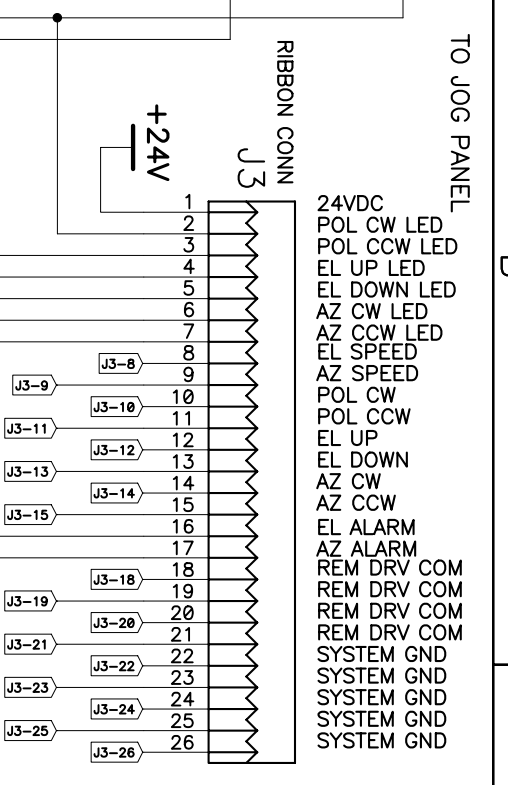
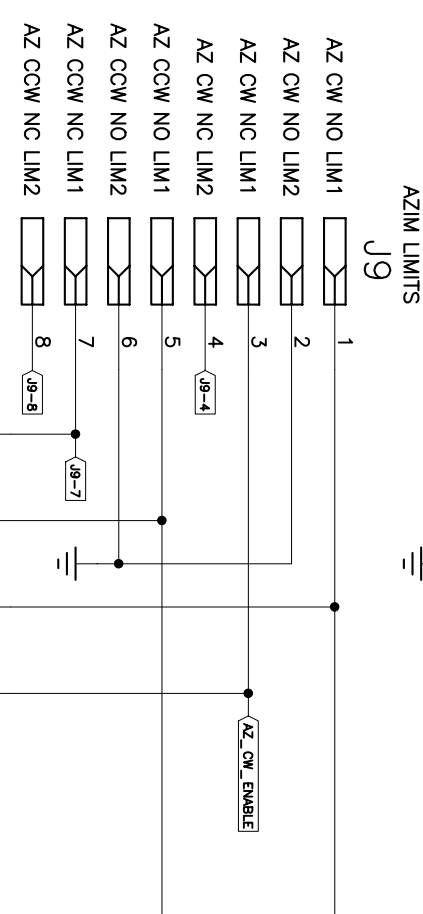
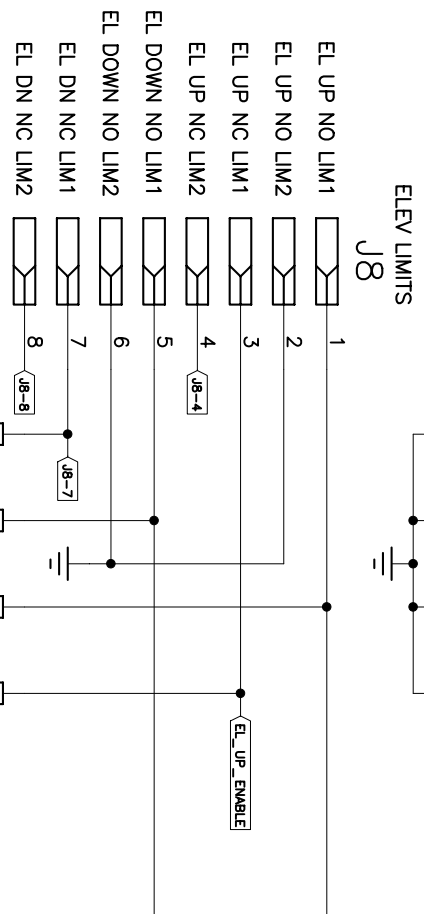
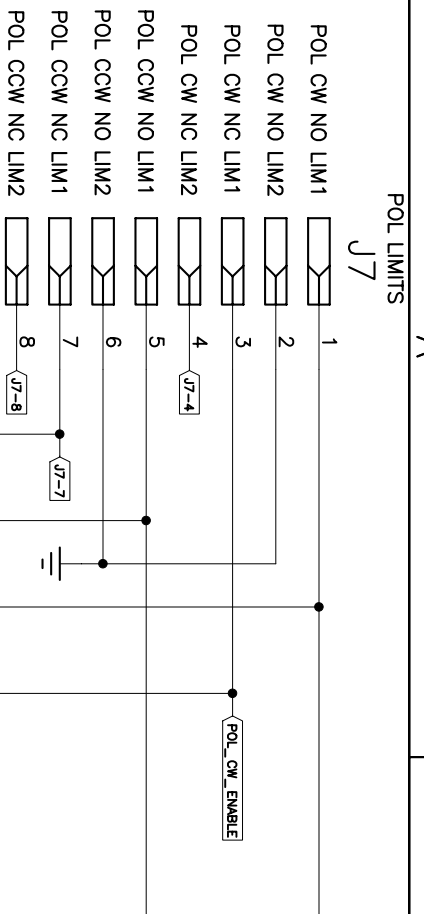
- A - 10 Aug 2000 Original release CCM
- B - 10 Nov 2003 as built for RC2500AIU-3revA JFR
- C - 19 July 2004 Added J14 - J16 & MOV1 - MOV22 JDK

Size	Number	Rev
B	B-2-SKINTRY-2	C
Date	19 July 2004	Drawn by
Filename	RC2_5KPCB_REV_C.sch	Sheet
		1 of 3





Title RC2500 AIU Main Board		
Relay Contacts/Speed Cntrl		
Size B	Number B-2-5KINTRY-2	Rev C
Date 19 July 2004	Drawn by JFR/JDK	
Filename RC2_5KPCB_REV.CSCH		Sheet 2 of 3



MOV11 - MOV22 ARE RCI
P/N MOV-68Z10

DIODES D4 - D9 ARE
RCI P/N D-1N5817

Title **RC2500** AIU Main Board
Drive Alarm & Limits

Size	Number	Rev
B	B-2-5KINTRY-2	C
Date	19 July 2004	Drawn by
Filename	RC2_5KPCB_REV/C.sch	Sheet
		3 of 3

