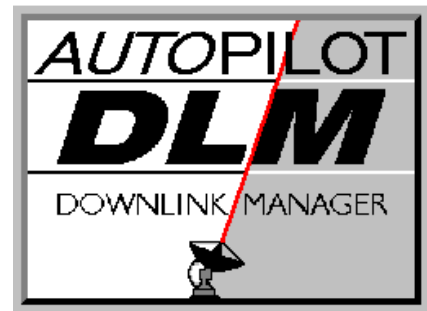


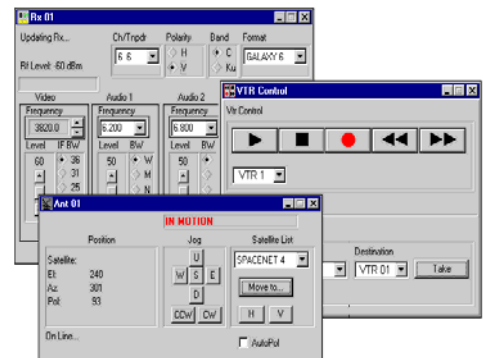
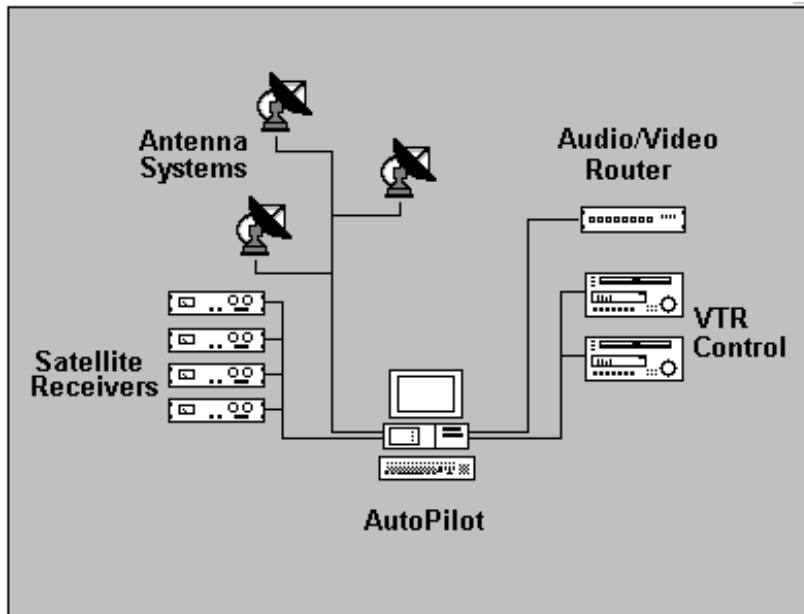
AUTOPILOT DLM

Downlink Manager

Windows based Satellite
Resource Management System



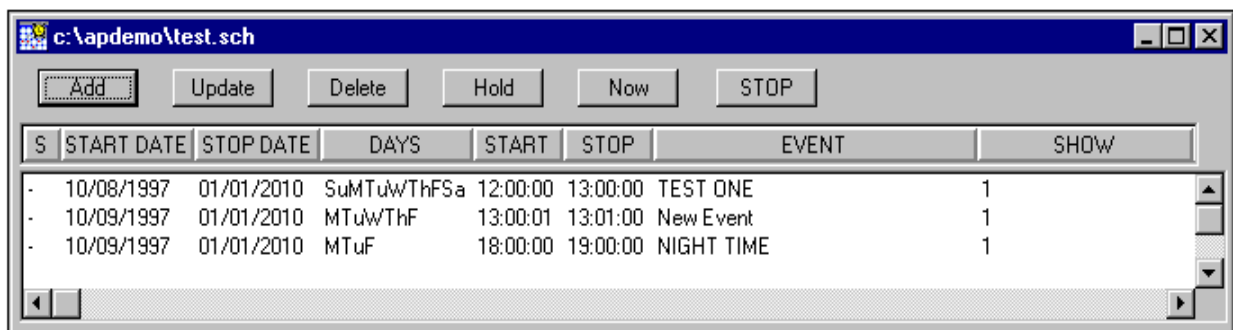
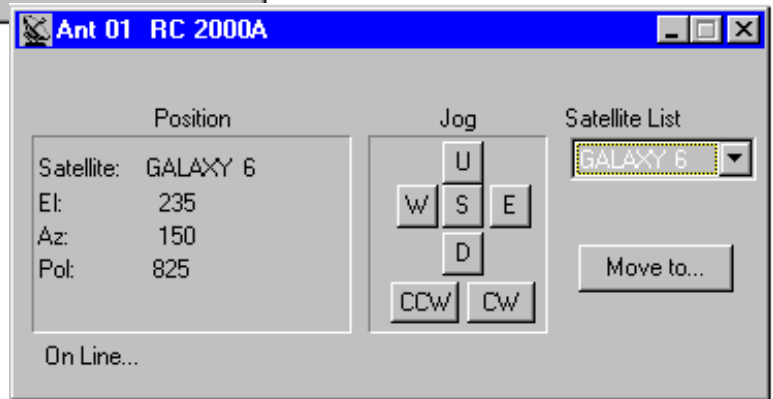
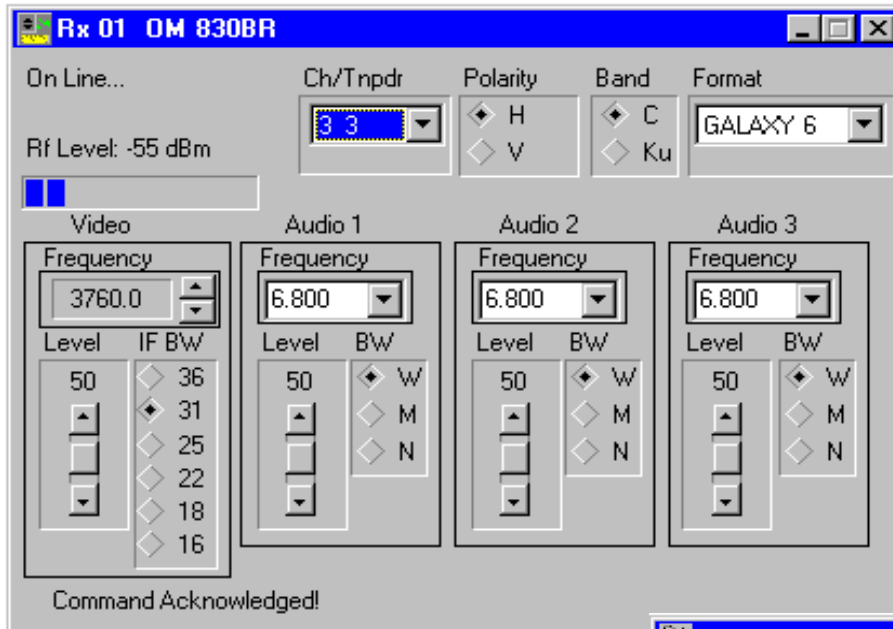
Integrated control of steerable
antenna systems and
satellite receivers



- **Windows 2000, XP or VISTA** platform
- User **sign-on** and **password** access
- Features an **integrated event scheduler** with **automatic event conflict checking**
- **Expandable** options.(Multi-User, Routing switch/VTR control; UPLINK Monitor and Control)
- **User friendly** (Select satellite positions with the click of a button; On screen controls easily select and peak satellite positions and control receiver parameters; Setup files store all parameters for instant recall)
- **Interactive** (Icons, moveable resizable windows, pull down menus, point and click operation)
- **Continuous monitoring** provides up to date status information on current receiver settings and antenna positions
- **Satellite information database** (which includes transponder frequency, name, polarization and program names) is easily modified to allow for updates

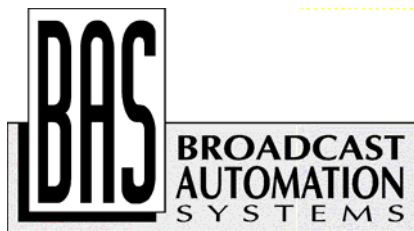
AUTOPILOT DLM DOWNLINK MANAGER

AUTOPILOT DLM provides unattended satellite antenna positioning and receiver tuning using the integrated event scheduler. Scheduled events can be programmed on a daily or weekly basis with event conflicts checked automatically.



Available Device Control - Downlink Systems

<u>AutoPilot</u>	<u>Antenna Controllers</u>	<u>Interface</u>
Andrew Antenna	APC100/APC400	232
Andrew Antenna	APC300	232
Andrew Antenna	APC3000	Ethernet
Comtech/CTI	EC-8/CTI 850	232
Research Concepts, Inc.	RC1000/1500/2000A/B/C/X 2500A/B	422 SA-BUS protocol
Scientific Atlanta	SA8840A, 8860	422
Vertex	7134/7200	232
<u>AutoPilot</u>	<u>Satellite Receivers</u>	
Andrew Antenna	ASR-300	422
DX Communications	DIR 657 A/B	232
Standard Comm	Omni810/830/830BR/930	232/422 jumper select
Scientific Atlanta	SA7500/7530A/7530I	422 SA-BUS protocol
Scientific Atlanta	SA9660	TTL adapter req'd
<u>AutoPilot</u>	<u>IRDs</u>	
Digital Vision	Bitlink	232
General Instruments	DSR1500/4500 DSR 4000/4001	SDLC adapter req'd
General Instruments	DSR 4800/4810	232/422
General Instruments	DSR 4500X/4520X	Ethernet
Harris	Netplus 300	232
KTech	DVM-150E	232
Standard Comm	SDR400/422CI, SDR7150	232/422
Scopus	IRD 2520,2600,2800,2900/2980	Ethernet
Sencore	MRD 3187A	Ethernet
Scientific Atlanta	SA922/9223/9225/9228	232
Scientific Atlanta	Power Vu/D9850	Ethernet
Tandberg	Alteia, TT1220,1260,1280, RX1290	232/422 Ethernet
Tiernan	TDR 6/7/60/777/778 HD4040	232 Ethernet
Wegener	Unity 4000/4600/5000	232
<u>AutoPilot</u>	<u>L Band Routers</u>	
Quintech	SRM/XRM series	232/422
ETL Systems	L Band Matrix	232/422
Evertz	XRF Routing Systems	Ethernet



Broadcast Automation Systems Inc.
35 Sunnypoint Crescent
Scarborough, Ontario, Canada
M1M 1B8
tel: 416-264-8415 fax: 416-264-8417
email: wjcoutts@netcom.ca